

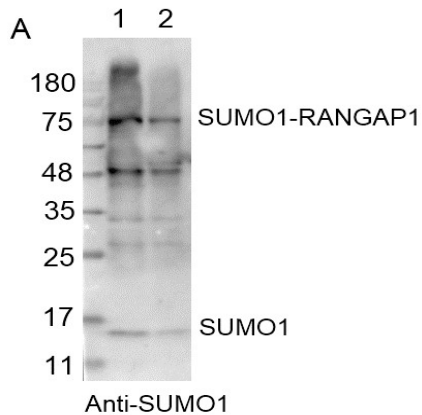
Anti-SUMO1

Cat. # Y3111, Y3112

Also Known as:	Anti-SUMO1 Mouse Monoclonal Antibody
Isotype:	Mouse IgG1
Clone	71-1-2
MW:	~55/25 kDa
Species:	human
Immunogen:	aminio acids 76-86 of human SUMO1
Concentration:	1 µg/µl
Stock Buffer:	10 mM PBS (pH 7.2), 10% Glycerol, 0.09% NaN ₃ (sodium azide)
Specificity:	Recognize human, rat mouse, Xenopus and Chicken SUMO1 and proteins modified with SUMO1
Purification:	Protein G affinity purified
Applications:	IP, WB
Quality Assurance:	Guaranteed for detecting endogenous SUMO1 in whole cell lysates (20-50 ug) using
Working Conditions:	WB (with ECL): 1:1000-3000 dilution

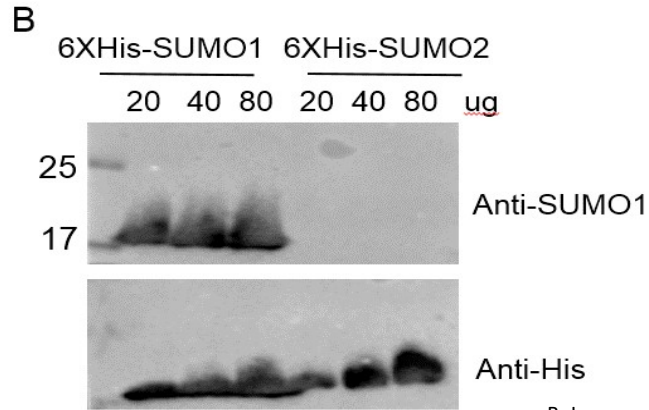
For IP, please refer to a protocol published in Nature Protocol, 2014 Apr;9(4):896-909.

Image:



A: Immunoblotting of 293T whole cell lysates, lane 1: 40 µg; lane 2: 20 µg





B: Immunoblotting of recombinant 6XHis-SUMO1 and 6XHis-SUMO2

Storage: Store at -20°C. Centrifuge after first thaw to maximize product recovery. Aliquot to avoid repeated freeze-thaw cycles.

Note: N/A





UBPBio
12635 E. Montview Blvd. Ste 100
Aurora, CO 80045, USA
Fax: 1-800-682-6801
Email: info@ubpbio.com
www.ubpbio.com





UBPBio
12635 E. Montview Blvd. Ste 100
Aurora, CO 80045, USA
Fax: 1-800-682-6801
Email: info@ubpbio.com
www.ubpbio.com

